



## 1400 FUTURA POLISHED CHROME HOLDERS

POLISHED CHROME PLATED • RECESSED WALL MOUNT • HARDWARE INCLUDED

SSC No.	Manuf No.	Description	Price Each
10J 3210	<b>F1406</b>	Soap Holder 3 <sup>3</sup> / <sub>8</sub> " D x 4 <sup>9</sup> / <sub>16</sub> " W	\$ 5.94
10J 3910	<b>F1405</b>	Toothbrush & Tumbler Holder 3 <sup>1</sup> / <sub>2</sub> " D x 4 <sup>5</sup> / <sub>8</sub> " W	5.94

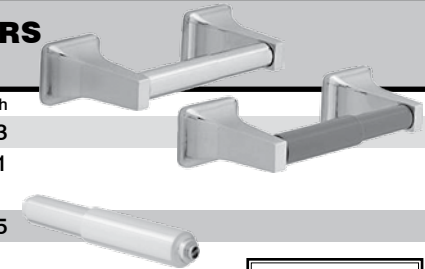


## 1400 FUTURA POLISHED CHROME PAPER HOLDERS

POLISHED CHROME PLATED • RECESSED WALL MOUNTS • HARDWARE INCLUDED

SSC No.	Manuf No.	Description	Price Each
10J 4810	<b>F1408C</b>	Holder With Chrome Roller 3 <sup>1</sup> / <sub>4</sub> " D x 17 <sup>7</sup> / <sub>8</sub> " H x 8 <sup>5</sup> / <sub>16</sub> " W	\$ 10.73
10J 4910	<b>F1408B</b>	Holder With Plastic Roller 3 <sup>1</sup> / <sub>4</sub> " D x 17 <sup>7</sup> / <sub>8</sub> " H x 8 <sup>5</sup> / <sub>16</sub> " W	8.71

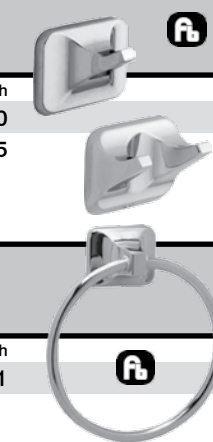
10J 5210	<b>EROLLP</b>	Chrome Roller For 1408 Paper Holder	\$ 4.45
----------	---------------	-------------------------------------	---------



## 1400 FUTURA POLISHED CHROME ROBE HOOKS

POLISHED CHROME • DEPTH 1<sup>5</sup>/<sub>8</sub>" • HEIGHT 1<sup>7</sup>/<sub>8</sub>" • WIDTH 2<sup>1</sup>/<sub>4</sub>" • WALL MOUNT INSTALLATION

SSC No.	Manuf No.	Description	Price Each
10J 5610	<b>F1401</b>	Single Robe Hook 1 <sup>5</sup> / <sub>8</sub> " Projection	\$ 3.80
10J 5710	<b>F1402</b>	Double Robe Hook 1 <sup>5</sup> / <sub>8</sub> " Projection	4.95



ALL PROJECTING PARTS ON 1400 FUTURA POLISHED CHROME ACCESSORIES ARE DIE CAST FROM HIGHEST QUALITY VIRGIN ZINC ALLOY (ZAMAK). ACCESSORIES MEET ASTM STANDARD B-86. HIGHLY POLISHED. PLATED WITH LAYER OF BRIGHT COPPER & DUPLEX LAYERS OF NICKEL FOR DURABILITY, CORROSION RESISTANCE & BRIGHTNESS. THE OUTER CHROMIUM LAYER PROVIDES A BRIGHT APPEARANCE, PREVENTS NICKEL OXIDATION & OFFERS ABRASION RESISTANCE.

## 1400 FUTURA POLISHED CHROME TOWEL RING

POLISHED CHROME • DEPTH 2<sup>1</sup>/<sub>4</sub>" • HEIGHT 5<sup>1</sup>/<sub>2</sub>" • WIDTH 5<sup>13</sup>/<sub>16</sub>" • WALL MOUNT INSTALLATION

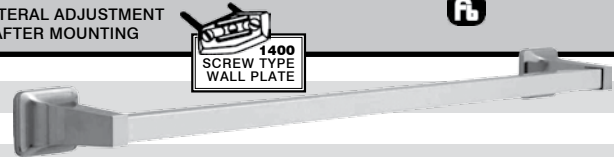
SSC No.	Manuf No.	Description	Price Each
10J 5910	<b>F1416</b>	Chrome Plated Towel Ring	\$ 8.91



## 1400 FUTURA POLISHED CHROME SQUARE TOWEL BAR SET

FURNISHED WITH HEAVY GAUGE STEEL PLATES • SCREW SLOTS ALLOW LATERAL ADJUSTMENT  
UNIQUE OVAL DESIGN PERMITS EASY ADJUSTMENT OF ACCESSORY EVEN AFTER MOUNTING

SSC No.	Manuf No.	Length x Bar Size	Price Each
10J 6310	<b>1418</b>	18" Long x 3/4" Square	\$ 12.22
10J 6410	<b>1424</b>	24" Long x 3/4" Square	13.37
10J 6510	<b>1430</b>	30" Long x 3/4" Square	15.22



## CHROME RECESSED SOAP & BAR

BRASS SHELLS STAMPED FROM SPECIAL ALLOY BRASS STRIP • HIGHLY POLISHED & PLATED WITH COPPER, DOUBLE NICKEL & CHROME  
MEETS COMMERCIAL & GOVERNMENT STANDARDS • GRAB BAR TUBING OF SEAMLESS CHROME PLATED BRASS  
REMOVABLE SOAP TRAYS ARE MADE OF TOUGH STYRENE COPOLYMER

SSC No.	Manuf No.	Overall Size	Wall Opening	Price Each
10J 4610	<b>858</b>	6 <sup>1</sup> / <sub>4</sub> " x 5 <sup>1</sup> / <sub>4</sub> "	5 <sup>1</sup> / <sub>4</sub> " x 4 <sup>1</sup> / <sub>4</sub> " x 1 <sup>1</sup> / <sub>4</sub> "	\$ 20.78
10J 3810		REPLACEMENT SOAP DISH FOR 808 SOAP & BAR		\$ 1.42
10J 3110	<b>600R</b>	CHROME RECESSED WALL CLAMP		\$ 5.13



NOTE: ALL RECESS ITEMS FURNISHED WITH WOOD SCREWS FOR STANDARD INSTALLATIONS. USE RECESS WALL CLAMP FOR CONVENTIONAL INSTALLATIONS, MACHINE SCREWS SECURE CLAMP TO BACK SIDE OF FRONT WALL.

continued on next page

## GRAB BARS

### GRAB BARS WITH CONCEALED MOUNTING

PROVIDES 1<sup>1</sup>/<sub>2</sub>" CLEARANCE FROM WALL & CAN SUPPORT LOADS IN EXCESS OF 900 LBS WHEN PROPERLY INSTALLED  
 TYPE-304 STAINLESS STEEL • 18 GA. TUBING WITH SATIN FINISH • 22 GA. 3<sup>1</sup>/<sub>4</sub>" COVER SNAPS OVER 1<sup>1</sup>/<sub>8</sub>" x 3<sup>1</sup>/<sub>8</sub>" MOUNTING FLANGE  
 COMPLIES WITH BARRIER-FREE DESIGN CODES



SSC No.	Manuf No.	Bar Diameter	Length	Wgt.	Price Each
10J 6900	<b>G13-112</b>	1 <sup>1</sup> / <sub>2</sub> "	12"	2.0 Lbs	\$ 44.49
10J 6990	<b>G13-118</b>	1 <sup>1</sup> / <sub>2</sub> "	18"	3.0 Lbs	42.82
10J 7000	<b>1371004</b>	1 <sup>1</sup> / <sub>2</sub> "	24"	3.0 Lbs	52.25
10J 7020	<b>G13-136</b>	1 <sup>1</sup> / <sub>2</sub> "	36"	3.0 Lbs	67.64
10J 7030	<b>G13-142</b>	1 <sup>1</sup> / <sub>2</sub> "	42"	3.0 Lbs	79.84
10J 7040	<b>G13-148</b>	1 <sup>1</sup> / <sub>2</sub> "	48"	3.1 Lbs	114.35



•EMERGENCY FIXTURES •EXPRESS® LAVATORY SYSTEMS •SHOWER GUIDE •WASHROOM ACCESSORIES  
 •ADA WASHROOM PRODUCT GUIDE •LABORATORY FITTINGS •PATIENT CARE •INSTALLATION & TECHNICAL DATA

For More Information On These Products Or On Products Not Listed,  
 Call *Salina Supply Company* At (785) 823-2221

**BOBRICK**

## B-297 SURFACE MOUNTED MEDICINE CABINET

ALL STEEL CABINET & TWO FIXED SHELVES WITH BAKED WHITE ENAMEL FINISH. THIS NO. 1 QUALITY MIRROR HAS A 1/8" ELECTROLYTICALLY COPPER PLATED GLASS. DOOR HAS ENAMELED STEEL PIANO HINGE & MAGNETIC CATCH. 69" AVERAGE MOUNTING HEIGHT & 60" BARRIER FREE MOUNTING HEIGHT.

SSC No.	Manuf No.	Overall Size	Wgt	Price Each
10H 0110	<b>B-297</b>	14 <sup>1</sup> / <sub>8</sub> " W x 20 <sup>1</sup> / <sub>4</sub> " H x 3 <sup>3</sup> / <sub>4</sub> " D	11.4 Lbs	\$ 230.40



## B-40 SURFACE MOUNTED SOAP DISPENSER

BLACK & GREY. PUSH-IN VALVE DIRECTS OPERATING PRESSURE TOWARD WALL. CORROSION-RESISTANT, SELF-CLEANING VALVE DISPENSES WIDE RANGE OF LIQUID SOAPS, LOTIONS & SYNTHETIC DETERGENTS. VANDAL-RESISTANT LID HAS UNIQUE KEYLESS LOCKING DEVICE. LID PIVOTS UP AFTER LOCK DISENGAGED FOR EASY TOP FILLING. LARGE CAPACITY, TRANSLUCENT CONTAINER HAS VISIBLE SOAP LEVEL. CONCEALED WALL FASTENING. REMOVABLE FROM WALL FOR CLEANING. 40 FLUID OUNCE CAPACITY.

SSC No.	Manuf No.	Overall Size	Wgt	Price Each
10H 1000	<b>B-40</b>	5 <sup>13</sup> / <sub>16</sub> " W x 6 <sup>7</sup> / <sub>8</sub> " H x 3 <sup>3</sup> / <sub>16</sub> "	1.2 Lbs	\$ 44.84

Wall To Push Button



## B-165 STAINLESS STEEL CHANNEL FRAME MIRROR

ONE PIECE FRAME BRIGHT POLISHED FINISH & MITERED CORNERS. WITH PHILLIPS HEAD SCREWS FOR EASY MIRROR REPLACEMENT. QUALITY ELECTROLYTICALLY COPPER PLATED 1/4" FLOAT/PLATE GLASS MIRROR. MIRROR GUARANTEED 10 YEARS AGAINST SILVER SPOILAGE. MIRROR EDGES & GALVANIZED STEEL BACK PROTECTED BY SHOCK ABSORBING MATERIAL. CONCEALED WALL HANGER. LOCKS IN PLACE WITH 2 THEFT RESISTANT SCREWS.

SSC No.	Manuf No.	Overall Size	Frame Size	Wgt	Price Each
10H 1220	<b>B-165 1836</b>	18" x 36" x 1/2"	1/2" x 1/2" x 1/2"	10 Lbs	\$ 108.60



## B-262 SURFACE MOUNTED C-FOLD PAPER TOWEL DISPENSER

DISPENSES 400 C-FOLD OR 525 MULTIFOLD TOWELS WITHOUT ADJUSTMENT OR ADAPTERS. TYPE-304 STAINLESS STEEL WITH SATIN FINISH CABINET TYPE DISPENSER. DOOR HAS TUMBLER LOCK & PIANO-HINGE. CABINET SLOTS INDICATE REFILL TIME.

SSC No.	Manuf No.	Overall Size	Wgt	Price Each
10H 1500	<b>B-262</b>	10 <sup>3</sup> / <sub>4</sub> " W x 14 <sup>3</sup> / <sub>4</sub> " H x 4" D	4.8 Lbs	\$ 78.23



## B-273 SURFACE MOUNTED SINGLE TOILET TISSUE DISPENSER

WITH CONTROLLED DELIVERY. HEAVY-DUTY CAST ALUMINUM WITH SATIN FINISH. HIGH-IMPACT PLASTIC SPINDLES HAVE CONCEALED LOCKING DEVICE. THEFT RESISTANT. HOLDS ONE ROLL UP TO 6" DIAMETER (2000 SHEETS).

SSC No.	Manuf No.	Size	Wgt	Price Each
10H 2000	<b>B-273</b>	12 <sup>1</sup> / <sub>2</sub> " W & Projects 4 <sup>7</sup> / <sub>8</sub> " From Wall	1.0 Lbs	\$ 31.51



## B-279 SURFACE MOUNTED WASTE RECEPTACLE

TYPE-304 STAINLESS STEEL WITH SATIN FINISH. BOTTOM EDGES HEMMED FOR MAXIMUM SAFETY. FURNISHED WITH HEAVY-GAUGE VINYL LINER. LINER IS REMOVABLE FOR SERVICING. 6.4 GALLON CAPACITY.

SSC No.	Manuf No.	Size	Wgt	Call For Price
10H 2500	<b>B-279</b>	14" W x 18" H x 6" D	10 Lbs	1-785-823-2221



continued on next page



## B-710 COMPACDRYER® SURFACE MOUNTED HAND DRYER

FOR BUDGET INSTALLATIONS. NO PROJECTING NOZZLE OR PUSH BUTTON. CONCEALED AIR-INTAKE GRILLE. QUIET OPERATION. ELECTRONIC SENSOR FOR NO-TOUCH OPERATION. AUTOMATIC CYCLE SHUT-OFF SAVES ENERGY & OPERATING COSTS. THE ONE-PIECE WHITE MOLDED PLASTIC COVER HAS LED ON/OFF INDICATOR LIGHT & UNIVERSAL OPERATING SYMBOLS. WITH SOLID-STATE ELECTRONICS 115V AC, 15 AMP, 1725 WATTS, 60 HZ, SINGLE PHASE, C-UL LISTED. ONE-YEAR WARRANTY.



SSC No.	Manuf No.	Overall Size	Wgt	Call For Price
10H 3000	<b>B-710</b>	10 <sup>3</sup> / <sub>4</sub> " W x 10 <sup>1</sup> / <sub>4</sub> " H x 5 <sup>1</sup> / <sub>2</sub> " D	8.1 Lbs	1-785-823-2221

## B-822 LAVATORY-MOUNTED SOAP DISPENSER

CONTURA SERIES. CORROSION-RESISTANT VALVE DISPENSES LIQUID SOAPS, LOTIONS & DETERGENTS. SPOUT ROTATES 360° WITHOUT DAMAGE TO THE VALVE MECHANISM. COVER LOCKS TO BODY WITH CONCEALED LOCKING MECHANISM, OPENED ONLY WITH SPECIAL KEY PROVIDED. PISTON, SPOUT & SUPPLY TUBE ASSEMBLE REMOVABLE AFTER UNLOCKING FOR CONVENIENT TOP FILLING & MAINTENANCE. TYPE-304 STAINLESS STEEL WITH BRIGHT POLISHED FINISH DISPENSER. 34 OUNCE CAPACITY CONTAINER.



SSC No.	Manuf No.	Overall Size	Wgt	Price Each
10H 3500	<b>B-822</b>	9 <sup>9</sup> / <sub>16</sub> " H x 3 <sup>5</sup> / <sub>16</sub> " Diameter	1.2 Lbs	\$ 69.37

## B-4112 STAINLESS STEEL SURFACE MOUNTED SOAP DISPENSER

CONTURA SERIES. CORROSION-RESISTANT VALVE DISPENSES LIQUID SOAPS, LOTIONS & DETERGENTS. CONTAINER IS DRAWN, 20 GAUGE, ONE PIECE CONSTRUCTION. WITH UNBREAKABLE REFILL WINDOW. WITH CONCEALED WALL FASTENING. HINGED FILLER-TOP REQUIRES SPECIAL KEY TO OPEN. VANDAL RESISTANT. 40 FLUID OUNCE CAPACITY.



SSC No.	Manuf No.	Overall Size	Wgt	Price Each
10H 4000	<b>B-4112</b>	7" W x 6 <sup>1</sup> / <sub>8</sub> " H x 3 <sup>5</sup> / <sub>16</sub> "	Wall To Push Button 2.1 Lbs	\$ 112.91

## B-2888 MULTI-ROLL TOILET TISSUE DISPENSER

SURFACE MOUNTED. TYPE-304 STAINLESS STEEL WITH SATIN FINISH. PLATED STEEL DISPENSING MECHANISM HOLDS TWO ROLLS UP TO 5<sup>1</sup>/<sub>4</sub>" DIAMETER (1800 SHEETS). EXTRA ROLL AUTOMATICALLY DROPS IN PLACE WHEN THE BOTTOM ROLL IS DEPLETED. THEFT-RESISTANT, HEAVY-DUTY SPINDLES HAVE 1/8" WALL THICKNESS. DOOR HAS FLAT FACE WITH PROTRUDING TUMBLER LOCK.



SSC No.	Manuf No.	Overall Size	Wgt	Price Each
10H 4500	<b>B-2888</b>	6 <sup>1</sup> / <sub>16</sub> " W x 11" H x 5 <sup>15</sup> / <sub>16</sub> " D	7.5 Lbs	\$ 101.46

For More Information On These Products Or On Products Not Listed,  
Call *Salina Supply Company* At (785) 823-2221



## EHD-501 XLERATOR® HYGIENIC TOUCHLESS HAND DRYER

WHITE • SENSOR OPERATED • SURFACE MOUNTED • 8 SECOND DRY TIME • ADJUSTABLE SPEED & SOUND CONTROL  
ADJ. HEAT CONTROL - HIGH, MEDIUM, LOW & OFF • EXTERNALLY VISIBLE SERVICE LED • 7 YEAR LIMITED WARRANTY  
110/120 VAC • 12.5 AMP • 1725 WATTS • 50/60 HZ • 11<sup>3</sup>/<sub>4</sub>" W X 12<sup>11</sup>/<sub>16</sub>" H X 6<sup>11</sup>/<sub>16</sub>" D



SSC No.	Manuf No.	Description	Wgt	Price Each
10H 3050	<b>EHD-501</b>	Sensor Operated 3366050	15 Lbs	\$ 891.64