



\*Price Change

## 1400 FUTURA POLISHED CHROME HOLDERS

POLISHED CHROME PLATED • RECESSED WALL MOUNT • HARDWARE INCLUDED

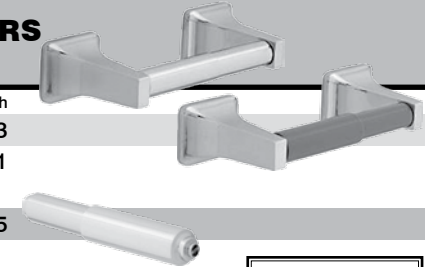
SSC No.	Manuf No.	Description	Price Each
10J 3210	<b>F1406</b>	Soap Holder 3 <sup>3</sup> / <sub>8</sub> " D x 4 <sup>9</sup> / <sub>16</sub> " W	\$ 5.94 *
10J 3910	<b>F1405</b>	Toothbrush & Tumbler Holder 3 <sup>1</sup> / <sub>2</sub> " D x 4 <sup>5</sup> / <sub>8</sub> " W	5.94 *



## 1400 FUTURA POLISHED CHROME PAPER HOLDERS

POLISHED CHROME PLATED • RECESSED WALL MOUNTS • HARDWARE INCLUDED

SSC No.	Manuf No.	Description	Price Each
10J 4810	<b>F1408C</b>	Holder With Chrome Roller 3 <sup>1</sup> / <sub>4</sub> " D x 1 <sup>7</sup> / <sub>8</sub> " H x 8 <sup>5</sup> / <sub>16</sub> " W	\$ 10.73
10J 4910	<b>F1408B</b>	Holder With Plastic Roller 3 <sup>1</sup> / <sub>4</sub> " D x 1 <sup>7</sup> / <sub>8</sub> " H x 8 <sup>5</sup> / <sub>16</sub> " W	8.71
10J 5210	<b>EROLLP</b>	Chrome Roller For 1408 Paper Holder	\$ 4.45



## 1400 FUTURA POLISHED CHROME ROBE HOOKS

POLISHED CHROME • DEPTH 1<sup>5</sup>/<sub>8</sub>" • HEIGHT 1<sup>7</sup>/<sub>8</sub>" • WIDTH 2<sup>1</sup>/<sub>4</sub>" • WALL MOUNT INSTALLATION

SSC No.	Manuf No.	Description	Price Each
10J 5610	<b>F1401</b>	Single Robe Hook 1 <sup>5</sup> / <sub>8</sub> " Projection	\$ 3.80
10J 5710	<b>F1402</b>	Double Robe Hook 1 <sup>5</sup> / <sub>8</sub> " Projection	4.25



ALL PROJECTING PARTS ON 1400 FUTURA POLISHED CHROME ACCESSORIES ARE DIE CAST FROM HIGHEST QUALITY VIRGIN ZINC ALLOY (ZAMAK). ACCESSORIES MEET ASTM STANDARD B-86. HIGHLY POLISHED. PLATED WITH LAYER OF BRIGHT COPPER & DUPLEX LAYERS OF NICKEL FOR DURABILITY, CORROSION RESISTANCE & BRIGHTNESS. THE OUTER CHROMIUM LAYER PROVIDES A BRIGHT APPEARANCE, PREVENTS NICKEL OXIDATION & OFFERS ABRASION RESISTANCE.

## 1400 FUTURA POLISHED CHROME TOWEL RING

POLISHED CHROME • DEPTH 2<sup>1</sup>/<sub>4</sub>" • HEIGHT 5<sup>1</sup>/<sub>2</sub>" • WIDTH 5<sup>13</sup>/<sub>16</sub>" • WALL MOUNT INSTALLATION

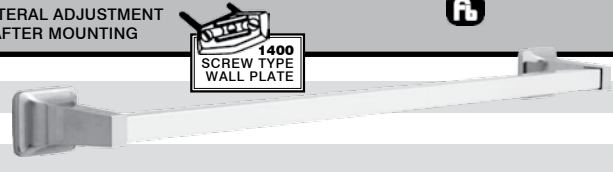
SSC No.	Manuf No.	Description	Price Each
10J 5910	<b>F1416</b>	Chrome Plated Towel Ring	\$ 8.91 *



## 1400 FUTURA POLISHED CHROME SQUARE TOWEL BAR SET

FURNISHED WITH HEAVY GAUGE STEEL PLATES • SCREW SLOTS ALLOW LATERAL ADJUSTMENT  
UNIQUE OVAL DESIGN PERMITS EASY ADJUSTMENT OF ACCESSORY EVEN AFTER MOUNTING

SSC No.	Manuf No.	Length x Bar Size	Price Each
10J 6310	<b>1418</b>	18" Long x 3/4" Square	\$ 12.22 *
10J 6410	<b>1424</b>	24" Long x 3/4" Square	13.37 *
10J 6510	<b>1430</b>	30" Long x 3/4" Square	15.22 *



## CHROME RECESSED SOAP & BAR

BRASS SHELLS STAMPED FROM SPECIAL ALLOY BRASS STRIP • HIGHLY POLISHED & PLATED WITH COPPER, DOUBLE NICKEL & CHROME  
MEETS COMMERCIAL & GOVERNMENT STANDARDS • GRAB BAR TUBING OF SEAMLESS CHROME PLATED BRASS  
REMOVABLE SOAP TRAYS ARE MADE OF TOUGH STYRENE COPOLYMER

SSC No.	Manuf No.	Overall Size	Wall Opening	Price Each
10J 4610	<b>858</b>	6 <sup>1</sup> / <sub>4</sub> " x 5 <sup>1</sup> / <sub>4</sub> "	5 <sup>1</sup> / <sub>4</sub> " x 4 <sup>1</sup> / <sub>4</sub> " x 1 <sup>1</sup> / <sub>4</sub> "	\$ 20.78 *
10J 3810		REPLACEMENT SOAP DISH FOR 808 SOAP & BAR		\$ 1.42
10J 3110	<b>600R</b>	CHROME RECESSED WALL CLAMP*		\$ 5.13 *

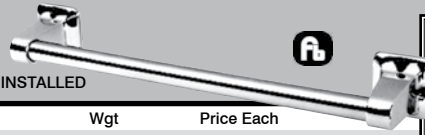


\*ALL RECESS ITEMS FURNISHED WITH WOOD SCREWS FOR STANDARD INSTALLATIONS. USE RECESS WALL CLAMP FOR CONVENTIONAL INSTALLATIONS, MACHINE SCREWS SECURE CLAMP TO BACK SIDE OF FRONT WALL.

continued on next page

### SAFETY FIRST GRAB BAR

POLISHED CHROME • STRAIGHT RESIDENTIAL GRAB BAR  
EXPOSED SCREW MOUNT • BASE DIMENSION 2<sup>1</sup>/<sub>4</sub>" X 2<sup>3</sup>/<sub>8</sub>"  
SAFETY ENGINEERED TO WITHSTAND 300 LB PULL WHEN SECURELY INSTALLED

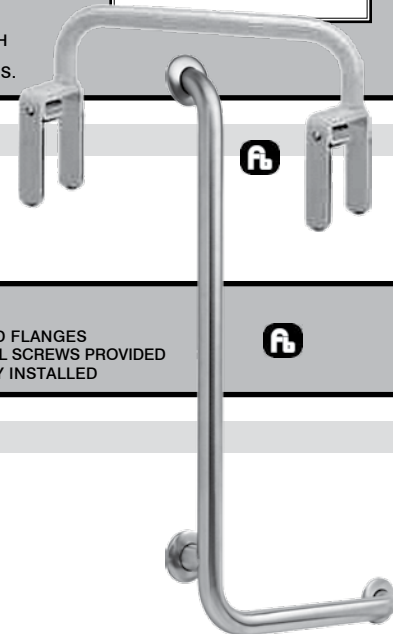


SSC No.	Manuf No.	Bar Length	Bar Size	Wgt	Price Each
10J 1110	<b>S1F516PC</b>	16"	7/8"	1.5 Lbs	\$ 15.76 *
10J 1210	<b>S1F524PC</b>	24"	7/8"	2.0 Lbs	18.26 *

**SAFETY FIRST HEAVY DUTY BARS** SAFETY ENGINEERED TO WITHSTAND 300 LB PULL WHEN SECURELY INSTALLED. POSTS ARE FINEST QUALITY VIRGIN ZINC ALLOY (ZAMAK) WITH COPPER, NICKEL & CHROME PLATING FINISH OVER HIGHLY POLISHED SURFACE. 7/8" X .045 BAR IS BRASS TUBING FINISHED WITH COPPER, NICKEL & CHROME PLATING OVER A HIGHLY POLISHED SURFACE. BAR SET SCREW IS 1/4" X 20" X 1 1/2" CADMIUM STEEL. MOUNTING SCREWS ARE 2" X 8" STAINLESS STEEL.

### SAFETY FIRST TUB SAFETY BAR

1" NON-CORROSIVE ANODIZED ALUMINUM, NON-SLIP BAR. ADJUSTABLE 1<sup>1</sup>/<sub>4</sub>" SUPPORT BRACKETS WITH PROTECTIVE PADS TO FIT MOST STANDARD TUB CONTOURS. INSTALLS WITH WRENCH-SCREWDRIWER PROVIDED. ALL FASTENERS INCLUDED. PORTABLE - CAN BE REMOVED & REINSTALLED ON OTHER TUBS.



SSC No.	Manuf No.	Size	Wgt	Price Each
10J 3100	<b>D590/620</b>	7 <sup>1</sup> / <sub>2</sub> " H x 18" W	6.0 Lbs	\$ 41.48

### STAINLESS STEEL 90° LEFT ANGLED GRAB BAR

1<sup>1</sup>/<sub>2</sub>" DIA 18 GA TYPE 304 STAINLESS STEEL TUBE BAR • 3" DIA 14 GA TYPE 304 STAINLESS STEEL ROUND FLANGES  
20 GA TYPE 304 STAINLESS STEEL SNAP LOCK COVERS • 1<sup>1</sup>/<sub>2</sub>" WALL CLEARANCE • #10 X 2" STAINLESS STEEL SCREWS PROVIDED  
EXCEEDS ADA ASTM STANDARDS • SAFETY ENGINEERED TO WITHSTAND 500 LB PULL WHEN SECURELY INSTALLED

SSC No.	Manuf No.	Size	Wgt	Price Each
10J 1410	<b>5682LH</b>	16" x 32" x 1 <sup>1</sup> / <sub>2</sub> "	3.6 Lbs	\$ 82.02 *



• EMERGENCY FIXTURES • EXPRESS® LAVATORY SYSTEMS • SHOWER GUIDE • WASHROOM ACCESSORIES  
• ADA WASHROOM PRODUCT GUIDE • LABORATORY FITTINGS • PATIENT CARE • INSTALLATION & TECHNICAL DATA

For More Information On These Products Or On Products Not Listed,  
Call *Salina Supply Company* At (785) 823-2221

### GRAB BARS WITH CONCEALED MOUNTING

PROVIDES 1<sup>1</sup>/<sub>2</sub>" CLEARANCE FROM WALL & CAN SUPPORT LOADS IN EXCESS OF 900 LBS WHEN PROPERLY INSTALLED  
TYPE-304 STAINLESS STEEL • 18 GA. TUBING WITH SATIN FINISH • 22 GA. 3<sup>1</sup>/<sub>4</sub>" COVER SNAPS OVER 1/8" x 3<sup>1</sup>/<sub>8</sub>" MOUNTING FLANGE  
COMPLIES WITH BARRIER-FREE DESIGN CODES



SSC No.	Manuf No.	Bar Diameter	Length	Wgt.	Price Each
10J 6900	<b>G13-112</b>	1 <sup>1</sup> / <sub>2</sub> "	12"	2.0 Lbs	\$ 28.83 *
10J 6990	<b>G13-118</b>	1 <sup>1</sup> / <sub>2</sub> "	18"	3.0 Lbs	31.88 *
10J 7000	<b>G13-124</b>	1 <sup>1</sup> / <sub>2</sub> "	24"	3.0 Lbs	33.23 *
10J 7020	<b>G13-136</b>	1 <sup>1</sup> / <sub>2</sub> "	36"	3.0 Lbs	43.61 *
10J 7030	<b>G13-142</b>	1 <sup>1</sup> / <sub>2</sub> "	42"	3.0 Lbs	51.73 *
10J 7040	<b>G13-148</b>	1 <sup>1</sup> / <sub>2</sub> "	48"	3.1 Lbs	71.96 *



**BOBRICK**

\*Price Change

## SURFACE MOUNTED MEDICINE CABINET

ALL STEEL CABINET & TWO FIXED SHELVES WITH BAKED WHITE ENAMEL FINISH. THIS NO. 1 QUALITY MIRROR HAS 1/8" ELECTROLYTICALLY COPPER PLATED GLASS. DOOR HAS ENAMELED STEEL PIANO HINGE & MAGNETIC CATCH. 69" AVERAGE MOUNTING HEIGHT & 60" BARRIER FREE MOUNTING HEIGHT.



SSC No.	Manuf No.	Overall Size	Wgt	Price Each
10H 0110	<b>B-297</b>	14 <sup>1</sup> / <sub>8</sub> " W x 20 <sup>1</sup> / <sub>4</sub> " H x 3 <sup>3</sup> / <sub>4</sub> " D	11.4 Lbs	\$ 173.40 *

## SURFACE MOUNTED SOAP DISPENSER

BLACK & GREY. PUSH-IN VALVE DIRECTS OPERATING PRESSURE TOWARD WALL. CORROSION-RESISTANT, SELF-CLEANING VALVE DISPENSES WIDE RANGE OF LIQUID SOAPS, LOTIONS & SYNTHETIC DETERGENTS. VANDAL-RESISTANT LID HAS UNIQUE KEYLESS LOCKING DEVICE. LID PIVOTS UP AFTER LOCK IS DISENGAGED FOR EASY TOP FILLING. LARGE CAPACITY, TRANSLUCENT CONTAINER PROVIDES VISIBLE SOAP LEVEL. CONCEALED WALL FASTENING. REMOVABLE FROM WALL FOR CLEANING. 40 FLUID OUNCE CAPACITY.



SSC No.	Manuf No.	Overall Size	Wgt	Price Each
10H 1000	<b>B-40</b>	5 <sup>13</sup> / <sub>16</sub> " W x 6 <sup>7</sup> / <sub>8</sub> " H x 3 <sup>3</sup> / <sub>16</sub> " Wall To Push Button	1.2 Lbs	\$ 30.17 *

## STAINLESS STEEL CHANNEL FRAME MIRROR

ONE PIECE FRAME BRIGHT POLISHED FINISH & MITERED CORNERS. PHILLIPS HEAD SCREWS FOR EASY MIRROR REPLACEMENT. WITH QUALITY ELECTROLYTICALLY COPPER PLATED 1/4" FLOAT/PLATE GLASS MIRROR; GUARANTEED 10 YEARS AGAINST SILVER SPOILAGE. MIRROR EDGES & GALVANIZED STEEL BACK PROTECTED BY SHOCK ABSORBING MATERIAL. CONCEALED WALL HANGER. LOCKS IN PLACE WITH 2 THEFT RESISTANT SCREWS.



SSC No.	Manuf No.	Overall Size	Frame Size	Wgt	Price Each
10H 1220	<b>B-165 1836</b>	18" x 36" x 1/2"	1/2" x 1/2" x 1/2"	10 Lbs	\$ 82.50

## SURFACE MOUNTED PAPER TOWEL DISPENSER

DISPENSES 400 C-FOLD OR 525 MULTIFOLD TOWELS WITHOUT ADJUSTMENT OR ADAPTERS. CABINET TYPE DISPENSER TYPE-304 STAINLESS STEEL WITH SATIN FINISH. DOOR HAS TUMBLER LOCK & PIANO-HINGE. CABINET SLOTS INDICATE REFILL TIME.



SSC No.	Manuf No.	Overall Size	Wgt	Price Each
10H 1500	<b>B-262</b>	10 <sup>3</sup> / <sub>4</sub> " W x 14 <sup>3</sup> / <sub>4</sub> " H x 4" D	4.8 Lbs	\$ 58.74

## SURFACE MOUNTED TOILET TISSUE DISPENSER

WITH CONTROLLED DELIVERY. HEAVY-DUTY CAST ALUMINUM WITH SATIN FINISH. HIGH-IMPACT PLASTIC SPINDLES HAVE CONCEALED LOCKING DEVICE. THEFT RESISTANT. HOLDS ONE ROLL UP TO 6" DIA. (2000 SHEETS).



SSC No.	Manuf No.	Size	Wgt	Price Each
10H 2000	<b>B-273</b>	12 <sup>1</sup> / <sub>2</sub> " W & Projects 4 <sup>7</sup> / <sub>8</sub> " From Wall	1.0 Lbs	\$ 27.77 *

## SURFACE MOUNTED WASTE RECEPTACLE

TYPE-304 STAINLESS STEEL WITH SATIN FINISH. BOTTOM EDGES HEMMED FOR MAXIMUM SAFETY. FURNISHED WITH HEAVY-GAUGE VINYL LINER. LINER IS REMOVABLE FOR SERVICING. 6.4 GALLON CAPACITY.



SSC No.	Manuf No.	Size	Wgt	Call For Price
10H 2500	<b>B-279</b>	14" W x 18" H x 6" D	10 Lbs	1-785-823-2221

continued on next page



## COMPACDRYER® SURFACE MOUNTED HAND DRYER

FOR BUDGET INSTALLATIONS. NO PROJECTING NOZZLE OR PUSH BUTTON. CONCEALED AIR-INTAKE GRILLE. QUIET OPERATION. ELECTRONIC SENSOR FOR NO-TOUCH OPERATION. AUTOMATIC CYCLE SHUT-OFF SAVES ENERGY & OPERATING COSTS. THE ONE-PIECE WHITE MOLDED PLASTIC COVER HAS LED ON/OFF INDICATOR LIGHT & UNIVERSAL OPERATING SYMBOLS. WITH SOLID-STATE ELECTRONICS 115V AC, 15 AMP, 1725 WATTS, 60 HZ, SINGLE PHASE, C-UL LISTED. ONE-YEAR WARRANTY.



SSC No.	Manuf No.	Overall Size	Wgt	Call For Price
10H 3000	<b>B-710</b>	10 <sup>3</sup> / <sub>4</sub> " W x 10 <sup>1</sup> / <sub>4</sub> " H x 5 <sup>1</sup> / <sub>2</sub> " D	8.1 Lbs	1-785-823-2221

## LAVATORY-MOUNTED SOAP DISPENSER

CONTURA SERIES. CORROSION-RESISTANT VALVE DISPENSES LIQUID SOAPS, LOTIONS & DETERGENTS. SPOUT ROTATES 360° WITHOUT DAMAGE TO THE VALVE MECHANISM. COVER LOCKS TO BODY WITH CONCEALED LOCKING MECHANISM, OPENED ONLY WITH SPECIAL KEY PROVIDED. PISTON, SPOUT & SUPPLY TUBE ASSEMBLY REMOVABLE AFTER UNLOCKING FOR CONVENIENT TOP FILLING & MAINTENANCE. TYPE-304 STAINLESS STEEL WITH BRIGHT POLISHED FINISH DISPENSER. 3.4 OUNCE CAPACITY CONTAINER.



SSC No.	Manuf No.	Overall Size	Wgt	Price Each
10H 3500	<b>B-822</b>	9 <sup>9</sup> / <sub>16</sub> " H x 3 <sup>5</sup> / <sub>16</sub> " Diameter	1.2 Lbs	\$ 53.58 *

## SURFACE MOUNTED SOAP DISPENSER

CONTURA SERIES. CORROSION-RESISTANT VALVE DISPENSES LIQUID SOAPS, LOTIONS & DETERGENTS. CONTAINER IS DRAWN, 20 GAUGE, ONE PIECE CONSTRUCTION. WITH UNBREAKABLE REFILL WINDOW. WITH CONCEALED WALL FASTENING. THE HINGED FILLER-TOP REQUIRES SPECIAL KEY TO OPEN. VANDAL RESISTANT. 4.0 FLUID OUNCE CAPACITY.



SSC No.	Manuf No.	Overall Size	Wgt	Price Each
10H 4000	<b>B-4112</b>	7" W x 6 <sup>1</sup> / <sub>8</sub> " H x 3 <sup>5</sup> / <sub>16</sub> "	Wall To Push Button 2.1 Lbs	\$ 85.98 *

## MULTI-ROLL TOILET TISSUE DISPENSER

SURFACE MOUNTED. TYPE-304 STAINLESS STEEL WITH SATIN FINISH. PLATED STEEL DISPENSING MECHANISM HOLDS TWO ROLLS UP TO 5<sup>1</sup>/<sub>4</sub>" DIAMETER (1800 SHEETS). EXTRA ROLL AUTOMATICALLY DROPS IN PLACE WHEN BOTTOM ROLL IS DEPLETED. THEFT-RESISTANT, HEAVY-DUTY SPINDLES HAVE 1/8" WALL THICKNESS. DOOR HAS FLAT FACE WITH PROTRUDING TUMBLER LOCK.



SSC No.	Manuf No.	Overall Size	Wgt	Price Each
10H 4500	<b>B-2888</b>	6 <sup>1</sup> / <sub>16</sub> " W x 11" H x 5 <sup>15</sup> / <sub>16</sub> " D	7.5 Lbs	\$ 76.10

For More Information On These Products Or On Products Not Listed,  
Call *Salina Supply Company* At (785) 823-2221